

THE HISTORY OF ST. DAVID'S CHURCH, WYNDHAM

This is a brief history of St. David's Church, Wyndham, its position within different parish boundaries and the incumbents and curates who have served the church.

IMPORTANT DATES CONCERNING CHURCHES IN THE PARISH

- 6th C - Timber church built on the site of St. Ceins
- 12th C - Original St Cein's church built in stone
- 15th C - Present St. Cein's church built (Nave & porch)
- 16th C - Tower added to St. Cein's church
- 1879 - St David's, Wyndham, opened (Nave & porch only)
- 1884 - St. David's, Wyndham extended (Chancel, sanctuary & vestry added)
- 1890 - St. Peter's Welsh church, Station Road, Nantymoel opened
- 1892 - St. Cein's church had major overhaul (Chancel & sanctuary added, porch remodelled)
- 1896 - St. David's vicarage built (Previously the vicarage was at "Primrose Villas" next to what was the Wyndham Cooperative Stores)
- 1900 - St. John's church (TIN CHURCH) built
- 1903 - St. David's church hall built
- 1909 - St. Paul's English church, Nantymoel opened
- 1914 - St. John's Church built on site of tin church (FOUNDATION STONE – This stone was laid by Mr. D. J. Thomas, Bryn Bedw – Nov 17th 1913) (Tin church re-built 100 yards north of the church on west side of railway track)
- 1921 - St Peter's Church consecrated on June 15th 1921
- 1960 - St. Peter's church demolished
- 1975 - St. John's church hall opened (former Roman Catholic Church)
- 1992 - St. Peter & Paul's church (formerly St. Paul's) closed
- 1997 - St. John's vicarage moved from Corbett Street to Park Avenue
- 2004 - St. John's church closed

A BRIEF HISTORY OF ST. DAVID'S CHURCH

The following information comes from the book "Church Building and Restoration in Victorian Glamorgan" by Geoffrey R. Orrin and published by University of Wales Press, Cardiff, 2004.

ST. DAVID'S CHURCH, TYNEWYDD, OGMORE VALE

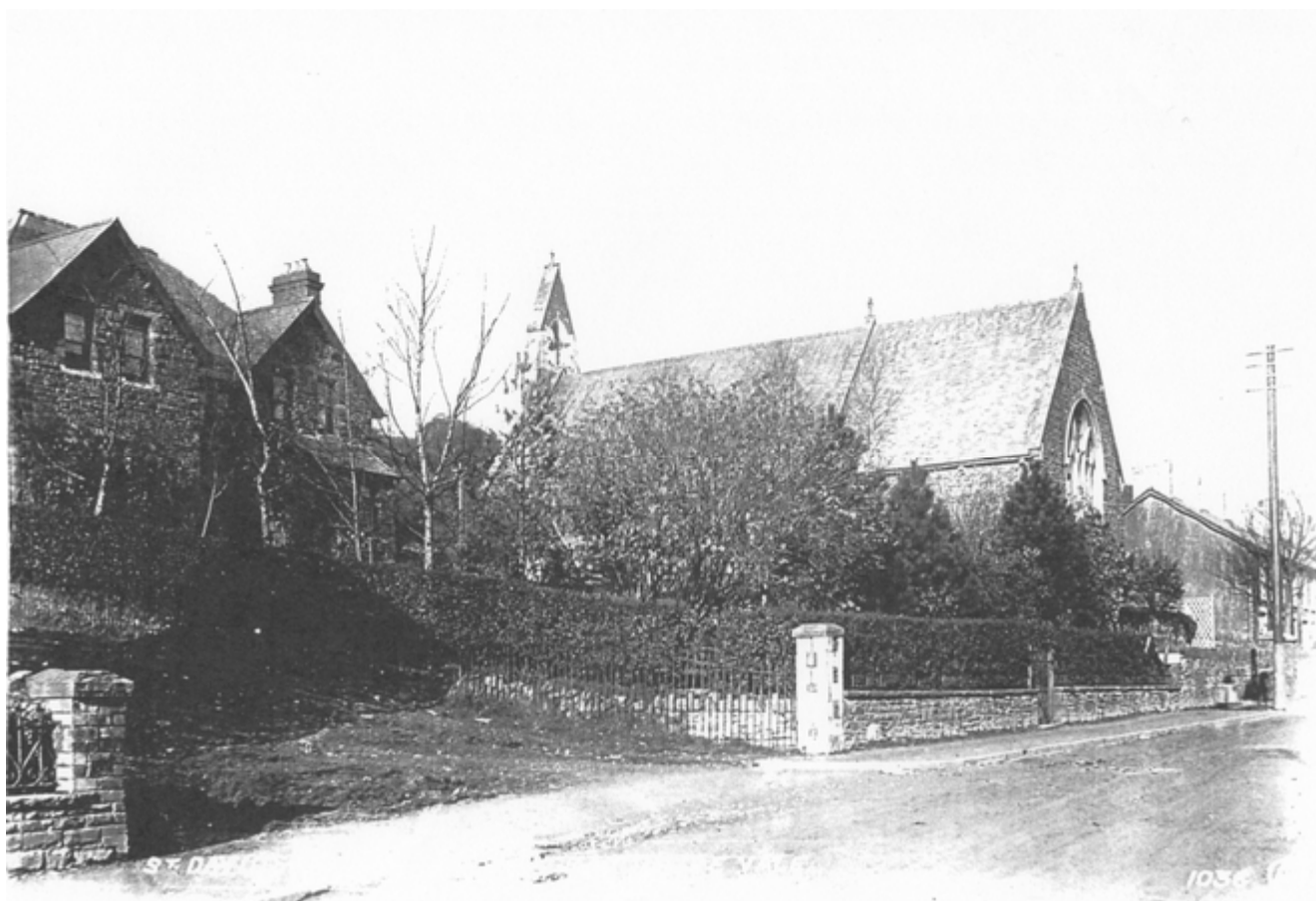
1879: New church built on new site given by earl of Dunraven as chapel of ease to St. Ceinwyr's, Llangeinor. Inhabitants of area mostly employed in collieries which had sprung up in the parish. Prior to erection of this church, nearest church was the parish church of Llangeinor, situated about 4 miles away. However, church people attended services in a school-church in Tynewydd called Graig-rhiw-Glyn, which had been built by Mrs. J. Blandy Jenkins.

Built in Early English Gothic style consisting only of nave, south porch and western bell turret. Foundations for chancel and vestry laid, but not built due to lack of funds. Constructed of local Pennant sandstone laid in thin courses with Bath stone dressings. Nave lighted by pairs of two-light trefoiled windows between two-stage buttresses, and pulpit lighted by single trefoiled lancet. West end of nave lighted by a pair of two-light trefoiled windows with quarterfoils in apex between a central four-stage buttress below a wooden bell turret. Roof of nave is of open timber construction and woodwork consists of red pine, stained and varnished. Open benches of pitch-pine, stained and varnished, seat 205 worshippers. Lamps and heating apparatus supplied by Messrs Singer and Buckley of Bridgend.

Contractor: William Howell, Nantymoel. Cost £1,785, ICBS grant £120, LDCES grant £100, Mrs Blandy Jenkins, Llanharan House and the Aber Colliery Company also made substantial contributions to building fund. Consecrated on 19th December 1879

1884: Chancel built with vestry on north side by John Pritchard. East window of five pointed lights with large cinquefoil within a circle in apex flanked by two roundels. Sanctuary paved with encaustic tiles. Cost £800. ICBS grant £120. Mrs Blandy Jenkins, Llanharan House and Messrs John and William Nicholson, Aber Colliery Company also made large contributions to cost of erection of chancel. Mrs Blandy Jenkins's total commitment to church amounted to £1,600. Consecrated on 18th November 1884.

Comments: John Pritchard designed St. David's in Early English Gothic style, which seemed most appropriate for a small mining community. Although he designed a church whose original plan included nave, chancel, vestry and south porch at an estimated cost of £1,785, only the nave with its bellcote and south porch were actually built in 1879. This was another instance where Pritchard exceeded the estimated cost of the church so that the chancel could not be built until five years later in 1884. The cost of the nave amounted to £1,600, almost the total estimated cost of the entire church. Pritchard failed to keep within the estimated cost of the building because he could not adapt his high architectural standards to building a cheap church for a poor mining community. This was the last church that Pritchard built in an industrial area. By way of contrast, Bruce Vaughan's architectural style was admirably suitable to building cheap utilitarian churches in the South Wales coalfield at an average cost of £1,500.



This old picture of St. David's Church shows clearly the join in the roof. The rear section built in 1879 and the front section built in 1884.

The organ, built by Thompson & Shackell Ltd, Organ Builders, Cardiff, was probably installed in 1890. The pictures below show the organ and a programme that was issued for a recital to commemorate the opening of the new organ on Wednesday, September 10th 1890.



This picture shows the programme performed by the organist and soloists.

PART I.		PART II.	
ORGAN SOLO	"Elevation" E. Batiste. MR. GEO. BULL.	CHORUS	"Gloria" Mozart. ST. DAVID'S CHOIR.
DUET	"Comfort ye" Handel.	DUET	"Go, Baffled Coward, Go!" Handel's "Messiah" MESSRS. F. G. LONG AND D. AFANLAIS LEWIS.
AIR	"Every Valley" Handel. MR. D. AFANLAIS LEWIS.	ORGAN SOLO	"Cavatina" J. Raff. MR. GEO. BULL.
SOLO	"Star of Bethlehem" F. H. Cowan. MISS FRANCISS.	SOLO	"The Better Land" F. H. Cowan. MISS FRANCISS.
ORGAN SOLO	"Andante in G" E. Batiste. MR. GEO. BULL.	SOLO	"Thou shalt break them" Handel. MR. D. AFANLAIS LEWIS.
DUET	"Quis Est Homo" G. Rossini. MRS. LLEWELLYN AND MISS FRANCISS.	ORGAN SOLO	"Chorus of Angels" Scoton Clark. MR. GEO. BULL.
DUET	"I feel the Deity within" Handel's	AIR	"Why do the Nations" Handel's "Messiah". F. G. LONG, Esq.
AIR	"Arise, Arise, ye Brave" Handel's F. G. LONG, Esq.	QUARTETT	"God is a Spirit" Strindale Bennett. MRS. LLEWELLYN, MISS FRANCISS, MESSRS. LONG AND LEWIS.
CHORUS	"We come in Bright Array" Handel's ST. DAVID'S CHOIR.	ORGAN SOLO	"Wedding March" Mendelssohn. MR. GEO. BULL.
SOLO	"O rest in the Lord" Mendelssohn. MRS. LLEWELLYN.		
ORGAN SOLO	"Offertoire in G" Weyl. MR. GEO. BULL.		
	FINALE		"HALLELUJAH CHORUS."

A BRIEF HISTORY OF PARISHES CONNECTED WITH ST. DAVID'S CHURCH

The ancient parish of Llangeinor had its western boundary as the river in the Garw valley and its eastern boundary as the Ogmor river in the Ogmor Valley. Its northern boundary was the top of Nantymoel, and its southern boundary south of Llangeinor village. Note the rest of the Ogmor Valley, east of the river Ogmor was in the parish of Llandyfodwg. (*see map at the rear of this document*)

In 1897, the parish of Llandyfodwg was taken out of the Ogmor Valley. The whole of the valley then became the Parish of Llangeinor with the western and eastern boundaries now being on the mountain tops. On the 12th May 1921 the Parish of Nantymoel was formed (*see map at the rear of this document*). This had its southern boundary at the south end of the Aber houses. The rest of the valley down to Blackmill (only the west side of the River Ogmor), Llangeinor village and the mountain area between Blackmill and Llangeinor stretching down to Bryncethin became the Parish of Llangeinor.

On 12th June 1963, the Parish of Nantymoel with Wyndham was created. This took St. David's out of the parish of Llangeinor and into the newly formed parish with its southern boundary at the northern end of North Road. The parish of Llangeinor remained as everything below this boundary and contained the two churches of St. John's and St. Cein's.

On 1st February 2000 the Parish of Llangeinor was grouped with the Parish of Nantymoel with Wyndham. The Rev'd Peter Abbott became Priest in Charge of the new grouped parishes on 12th April 2000 and on the 23rd April 2001 was inducted as vicar of the parish of Nantymoel with Wyndham whilst remaining priest in charge of the Parish of Llangeinor.

2003 saw another major alteration in the boundaries of the parish. On 1st January 2003 the new Parish of Cwm Ogwr was formed. This covered the whole valley down to and including all of Blackmill. The two churches in this new parish being St. David's and St. John's. At this time the church of St. Cein was taken out of the parish and joined with the Garw valley forming the new Parish of Llangeinor with Garw Valley.

The church of St. Tyfodwg in Glyn Ogwr had been in limbo for a number of years, with no resident vicar and the threat of closure. This together with the closure of St. John's Church, Ogmor Vale in 2004 led the diocese to once again make a boundary change and on 1st October 2006 the Parish of Llandyfodwg and Cwm Ogwr was formed.



INCUMBENTS AND CURATES WHO HAVE SERVED AT ST. DAVID'S CHURCH

CURATES

	<u>TENANCY</u>	<u>PARISH</u>	<u>CHURCHES IN PARISH</u>
Alcwyn S. Jones	1903-1904	Llangeinor	(St.Davids, St.Johns, St.Ceins)
J. G. Tyson	1904-1906	Llangeinor	(St.Davids, St.Johns, St.Ceins)
William Phillips	1906-1908	Llangeinor	(St.Davids, St.Johns, St.Ceins)
G. D. John	1908-1912	Llangeinor	(St.Davids, St.Johns, St.Ceins)
Norman Grey	1912-1915	Llangeinor	(St.Davids, St.Johns, St.Ceins)
D. T. Jones	1915-1917	Llangeinor	(St.Davids, St.Johns, St.Ceins)
E. Rees	1918-1921	Llangeinor	(St.Davids, St.Johns, St.Ceins)
W. E. Probert	1920-1928	Llangeinor	(St.Davids, St.Johns, St.Ceins)
J. E. James	1921-1924	Llangeinor	(St.Davids, St.Johns, St.Ceins)
F. E. Stanbury	1929-1931	Llangeinor	(St.Davids, St.Johns, St.Ceins)
L. V. Payne	1931-1935	Llangeinor	(St.Davids, St.Johns, St.Ceins)
T. R. Gibby	1935-1939	Llangeinor	(St.Davids, St.Johns, St.Ceins)
J. Vernon Bevan	1939-1943	Llangeinor	(St.Davids, St.Johns, St.Ceins)
D. Grenfell Rees	1943-1947	Llangeinor	(St.Davids, St.Johns, St.Ceins)
J. P. Mackney	1947-1949	Llangeinor	(St.Davids, St.Johns, St.Ceins)
Frank Graham Jenkins	1950-1953	Llangeinor	(St.Davids, St.Johns, St.Ceins)
Raymond Emlyn Peter Davies	1953-1958	Llangeinor	(St.Davids, St.Johns, St.Ceins)
George Albert de Burgh-Thomas	1958-1960	Llangeinor	(St.Davids, St.Johns, St.Ceins)
Peter Ungoed-Thomas	1960-1964	Llangeinor	(St.Davids, St.Johns, St.Ceins)

INCUMBENTS

David Philips	1891-1901	†	Llangeinor (St.Davids, St.Johns, St.Ceins)
John Jones	1901-1907	†	Llangeinor (St.Davids, St.Johns, St.Ceins)
Arthur Jenkin Edwards	1908-1916	†	Llangeinor (St.Davids, St.Johns, St.Ceins)
Hugh Thomas	1916-1935	†	Llangeinor (St.Davids, St.Johns, St.Ceins)
Cyril Andrew Davies	1935-1946	†	Llangeinor (St.Davids, St.Johns, St.Ceins)
Harold George Rew	1946-1950	†	Llangeinor (St.Davids, St.Johns, St.Ceins)
Richard Samuel Allen	1950-1956	†	Llangeinor (St.Davids, St.Johns, St.Ceins)
Roy Meredith Owen	1956-1962	†	Llangeinor (St.Davids, St.Johns, St.Ceins)
Aneurin Gwyn Morgan	1962-1965	†	Nantymoel w. Wyndham (St Davids, St Pauls)
Kenwyn H. P. Evans	1965-1971	†	Nantymoel w. Wyndham (St Davids, St Pauls)
John Flowers	1971-1976		Nantymoel w. Wyndham (St Davids, St Pauls)
Kenneth John Jordan	1976-1981	†	Nantymoel w. Wyndham (St Davids, St Pauls)
David Thomas	1981-1985		Nantymoel w. Wyndham (St Davids, St Pauls)
Keith Andrews	1985-1990		Nantymoel w. Wyndham (St Davids, St Pauls)
Huw Martin Jenkins	1991-1993	†	Nantymoel w. Wyndham (St Davids, St Pauls)
Glyn Austin	1993-1997		Nantymoel w. Wyndham (St Davids)
Stephen F. Ambani	1997-1999		Nantymoel w. Wyndham (St Davids)
Peter J. Abbott	2000-2001		Llangeinor & N w W (St Davids, St Johns, St Ceins)
	2002-2003		Cwm Ogwr (St Davids, St Johns)
Kevin W. Lake	2004-2006		Cwm Ogwr (St Davids, St Johns)
	2006-2008		Llandyfodwg & Cwm Ogwr (St Davids, St Tyfodwgs)
Edward Farrington Dowland-Owen	2008-2010		Llandyfodwg & Cwm Ogwr (St Davids, St Tyfodwgs)
Julian Jenkins	2011-		Llandyfodwg & Cwm Ogwr (St Davids, St Tyfodwgs)

For a complete list of Curates & Incumbents in the Ogmore Valley see separate document entitled :-
CURATES & INCUMBENTS OF PARISHES IN THE OGMORE VALLEY